



# GENERAL PRACTICE NURSING NEWSLETTER

Mar-Apr 2025



07883 328933

[www.thehubplus.co.uk](http://www.thehubplus.co.uk)

[ddlmc.thehubplus@nhs.net](mailto:ddlmc.thehubplus@nhs.net)



**THE HUB PLUS  
LEARNING PORTAL:  
YOUR GATEWAY TO  
KNOWLEDGE AND  
SKILLS!**

**FIND OUT MORE HERE**

At The Hub Plus, we believe in a limitless pursuit of knowledge, breaking down the barriers to education. Our platform offers a diverse range of courses, led by expert instructors, catering to learners of all backgrounds and interests.

Join our exciting community, navigate our user-friendly platform, and embark on your learning journey with us.

## SUPPORT FOR YOU <<<

### SHINY MIND

Shiny Mind gives people the power to shine, improve their wellbeing, build confidence and transform their lives. [Download today for free.](#)

### CAVELL NURSES' TRUST

We help nurses, midwives and healthcare assistants, both working and retired, when they're suffering personal or financial hardship. [Click here for more information.](#)

### DERBYSHIRE GPN WHATSAPP GROUP

A safe space to ask questions to your GPN colleagues, learn about educational opportunities and network with your peers. [Click here to join the group.](#)

### DERBYSHIRE NURSING ASSOCIATE WHATSAPP GROUP

A safe space to ask questions to your NA colleagues, learn about educational opportunities and network with your peers. [Click here to join the group.](#)







## 'CHEERS TO YOU!'

If you have a colleague that is doing an amazing job, this is your chance to give them the recognition they deserve. Whether its being a great team player, passing a course or simply going above and beyond. Let us know by completing the form for a shoutout in the next Nursing newsletter.

Cheers to Sarah L.,

*"Been a great supervisor from the beginning, supportive and allowed me to build confidence.*

*Guided me to better understand the role and responsibilities and opened up new skills. Listens and encourages progress."*

**Chellaston and Melbourne Medical Centre**

## To add yours, click here

Cheers to Alannah B.,

*"Over the last 12 months Alannah has taken on the role of lead Nurse. At the time of her taking on the job, the nursing team was broken and burnout. Alannah with the support of her new team and management, has been able to rebuild the team and brought in new blood. She is always smiling, singing and dancing. All the patients love her. Just wanted her to know how much she is appreciated."*

**Aitune Medical Practice**

Cheers to Saran C.,

*"Providing support to student nurse associate, always helpful and a role model"*

**Chellaston and Melbourne Medical Centre**

## CPD FUNDING

NHSE have confirmed continuing professional development (CPD) investment for nursing associates, nurses, midwives and allied health professionals (AHPs) for 2024/25. the below guidance supports eligible individuals to access their £333.

[For information about CPD funding please click here](#)





# >>> HUB PLUS UPDATES

## WE WISH A FOND FAIRWELL TO...

### **Debs Draycott - GPN Development Lead**

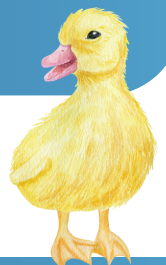
"It is with mixed emotions that, as from end of March 2025, I will be retiring from my GPN Development post at the Hub+ Derbyshire. After 40yrs in the NHS – 18 within General Practice, it is now time for the next generation of amazing GPNs to lead the way! It has been an absolute pleasure to work with you all, I have enjoyed helping to set up the Lead GPN Network across Derbyshire and to have met so many truly inspirational GPNs. I hope you have found it beneficial and that you now feel more supported. Primary Care continues to be a challenging environment to work in, but I have no doubt that you will continue to work with your patients, teams and NHS colleagues with the compassion and professionalism I have witnessed. I know the Hub+ will continue to be there to support you however they can. I shall be continuing a small amount of independent clinical and mentoring work, so will no doubt bump in to some of you. Thank you for all that you do and best wishes for wherever the future takes you."

### **Samantha Cadd- Nursing Associate Ambassador**

"It is with great sadness to announce that I am leaving my role as Nursing Associate Ambassador at the Hub+ at the end of March after 12 months as I am moving to a GP surgery in Staffordshire. I have thoroughly enjoyed my last 12 months and everything I have achieved with the help of Amy, Charlotte and all of the lovely NA's both registered and students. I would also like to thank everyone at the Hub+ for supporting me during my time with them.

I wish you all the best in your future careers, if you need anything at all please message Amy or Charlotte directly."

**We wish both Debs and Samantha the very best in their next adventures and want to thank them for all of their support**





## FUNDAMENTALS

Fundamentals for General Practice Nursing and Registered Nursing Associates

The programme aims to equip nurses, who are new to general practice, with baseline competence in the General Practice Nursing (GPN)/ Nursing Associate (NA) role. It combines academic and work-based learning to ensure comprehensive training.



For any further information, contact [georgia.hunt1@nhs.net](mailto:georgia.hunt1@nhs.net) for GPN or [samantha.cadd3@nhs.net](mailto:samantha.cadd3@nhs.net) for NA

## MONTHLY WORKSHOPS

We offer monthly workshops and peer calls for our new to practice GPNs and Student Nursing associates/ RNAs For New to Practice workshops please follow the link [here](#). For SNA/NA workshops please see contact [samantha.cadd3@nhs.net](mailto:samantha.cadd3@nhs.net)

## NURSING ASSOCIATE PRECEPTORSHIP

The next NA preceptorship drop in workshop is on 3rd March at 1pm. Please use this drop in to ask any questions about being newly registered e.g. what happens now?

## >>> MID CAREERS

### NON-MEDICAL PRESCRIBING FUNDING

Derbyshire Training Hub will be funding a number of places on the Non-Medical Prescribing Module (V300) from April 2024.

[FIND OUT MORE AND COMPLETE YOUR EXPRESSION OF INTEREST FORM HERE.](#)

### LARC TRAINING AND LOC FUNDING

Full funding is available for clinicians to undertake coil or implant training.

[FIND OUT MORE HERE](#)

### NMC SSSA TRAINING

The SSSA Supervisor and Assessor training is a requirement for taking nursing students and supporting trainee nurse associate apprentices.

[FIND OUT MORE HERE](#)



## GPN CAREER PATHWAY

The Hub Plus has developed a GPN career pathway which follows the journey of a career from early careers to senior careers.

[FIND OUT MORE HERE](#)







## DERBYSHIRE LEAD GPN MONTHLY FORUM

Exclusive event for Lead GPNs or Practice representatives in Derby & Derbyshire ICB. Get updates on local, regional, and national news. Discover training opportunities from The Hub Plus. Engage with educational speakers, network, and share best practices. Explore relevant topics and develop key skills. Connect with Lead GPNs from across Derbyshire ICB.

**PLEASE NOTE: This event is only open for one Lead GPN or a representative from each Practice across Derby & Derbyshire ICB**

**BOOK HERE**

## GPN LEADERSHIP TOOLKIT

This toolkit has been co-produced with GPNs themselves and provides a one stop shop of development resources designed to support GPNs to not only achieve their full potential but also develop their leadership style and skills to help futureproof this integral healthcare role.



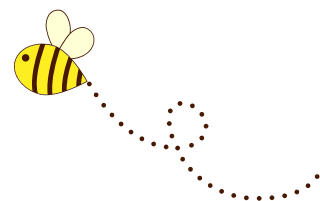
**FIND OUT MORE HERE**

## GPN SHADOWING OPPORTUNITIES

Leadership/shadowing opportunities, why not attend and shadow at these system meetings.

For more information contact:

**Charlotte** - [charlotte.darby6@nhs.net](mailto:charlotte.darby6@nhs.net)



Derbyshire Nursing & Midwifery Faculty Meeting  
12th March 2025 10:00-11:30  
MSTeams

THE HUB PLUS - SUPPORTING OUR GENERAL PRACTICE FAMILY ON THEIR PRIMARY CARE JOURNEY.

Find us on:



[ddlmc.thehubplus@nhs.net](mailto:ddlmc.thehubplus@nhs.net)



[www.thehubplus.co.uk](http://www.thehubplus.co.uk)



07883 328933